

An Update on the Distribution of Major Fishery Farms along the Coast of China

Ingosstrakh' s P&I Correspondent in China Messrs. Huatai Insurance Agency & Consultant Service Ltd., keeps us in loop of update concerning the distribution of fishery farms along the coast of China. The fishery farms mentioned in this Circular are located in the waters off Tianjin Port and Yantai Port.

Fishery Farms in the Waters off Tianjin Port

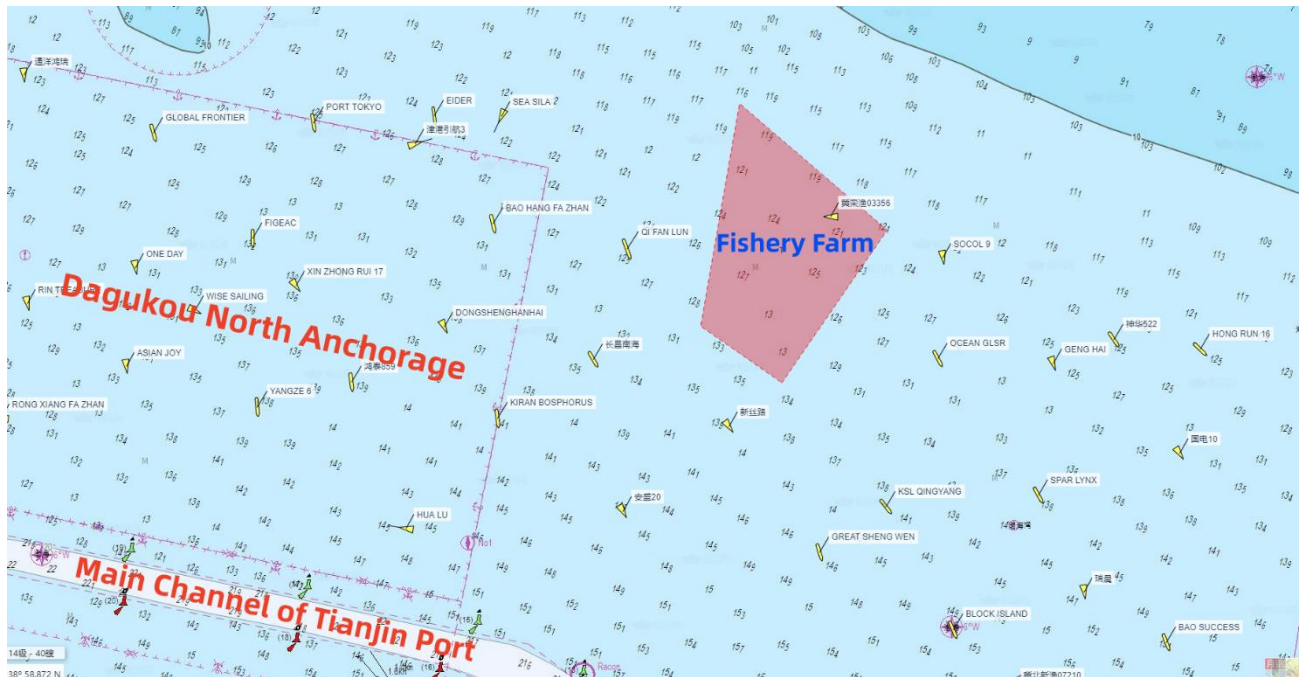
The case materials obtained by us indicate that there are fishery farms in the waters connecting the following 4 coordinates:

38°56'48.4800''N 118°08'48.7133''E

38°57'40.6367''N 118°09'34.7977''E

38°58'23.9148''N 118°08'30.1613''E

38°57'07.8551''N 118°08'13.3396''E



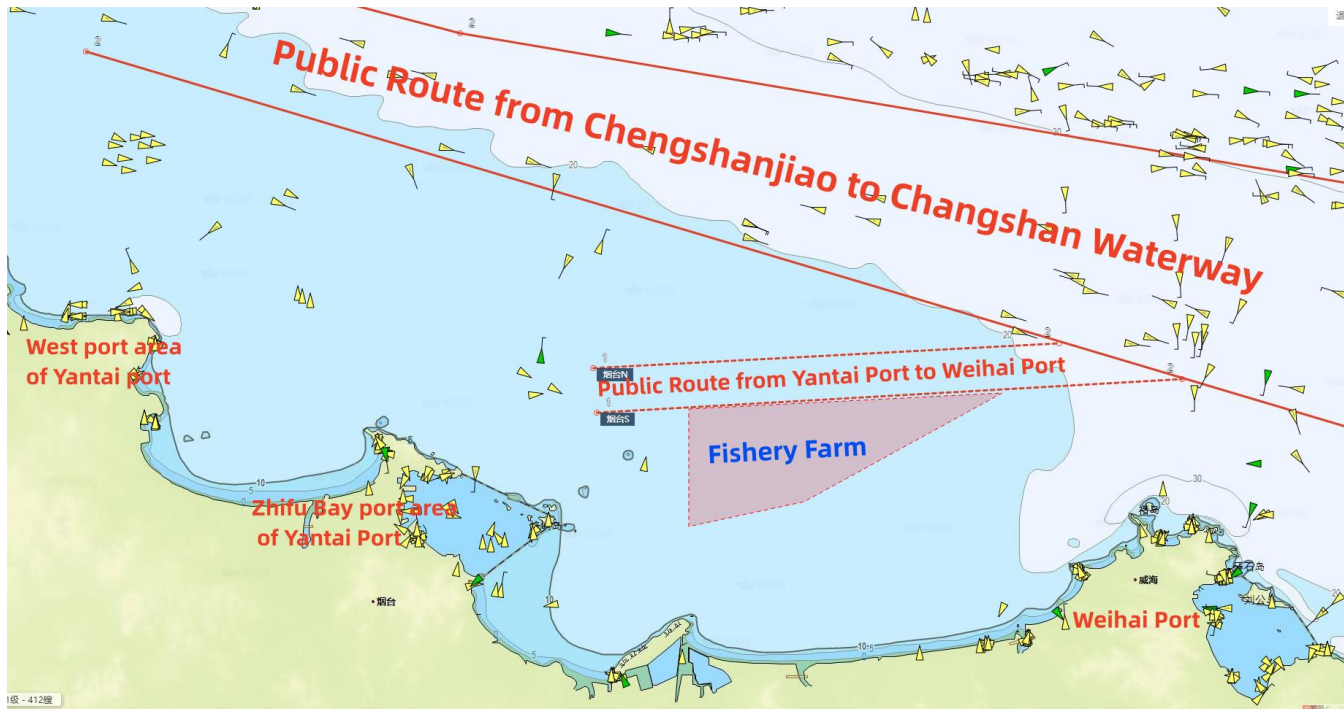
The above water area is located in the north of the main channel of Tianjin Port and east of Dagukou North Anchorage, around 2 nautical miles from the main channel and around 1 nautical mile from the northeast corner of Dagukou North Anchorage.

Tianjin port is a busy port in northern China, there are numerous ships navigating, anchoring and operating in the port and the water area for safe anchoring in the anchorage, especially in Dagukou North Anchorage is limited. When a suitable anchor position is unavailable within the anchorage, ships planning to anchor at the Dagukou North Anchorage may choose to drop anchor outside the anchorage (east of the Anchorage) if permitted by VTS. In this case, the risk of ships accidentally entering the fishery farm will be increased.

Fishery Farms in the Waters off Yantai Port

On January 12, 2024, Shandong Maritime Safety Administration issued Navigation Notice, announcing the public route from Chengshanjiao to Changshan waterway, the public route from Yantai port to Weihai port and the latest geographical scope

of the fishery farms on the south side of the route. We have noticed that the latest geographical scope of the fishery farms has been expanded.



1. Distribution of the Fishery Farms

Around 200 meters to the south of the public route from Yantai Port to Weihai Port, there are fishery farms in the waters connecting the following 4 coordinates:

37°38'39"N 121°38'48"E

37°39'24"N 121°56'30"E

37°34'30"N 121°45'20"E

37°33'24"N 121°38'48"E

2. Public Routes

(1) Public Route from Chengshanjiao to Changshan Waterway

North Boundary of the Public Route:

37°44'02"N 122°51'32"E

37°55'30"N 121°25'54"E

37°59'23"N 121°07'23"E

South Boundary of the Public Route:

37°32'49"N 122°37'09"E

37°54'41"N 121°04'49"E

(2) Public Route from Yantai Port to Weihai Port

North Boundary of the Public Route:

37°40'30"N 121°33'24"E

37°41'36"N 121°59'42"E

South Boundary of the Public Route:

37°38'30"N 121°33'36"E

37°40'00"N 122°06'36"E

3. Precautions Mentioned in the Navigation Notice Issued by the MSA

(1) Ships below 100,000 DWT sailing from Chengshanjiao to Zhifu Bay port area of Yantai Port are recommended to navigate along the public route from Yantai Port to Weihai Port.

(2) Ships with 100,000 DWT or above sailing from Chengshanjiao to the Zhifu Bay port area or ships sailing to the West port area of Yantai port are recommended to navigate along the public route from Chengshanjiao to Changshan waterway and choose appropriate waters to turn to the port area.

Huatai's suggestions

When navigating in the above waters, ships are suggested to navigate with caution and consider taking appropriate actions and preventive measures:

(1) Please note that the geographical scope of the fishery farm is changing constantly, and the coordinates of the fishery farm mentioned in this Circular are for reference only.

(2) If there is a route recommended by the MSA, ships are advised to follow such recommended routes with great caution.

(3) When sailing in the waters near the fishery farms, ships should use visual, hearing and any other available means to maintain a proper lookout, keep close contact with the vessel traffic service center and pilot station, and consider following their suggestions after confirming that the surrounding environment and target waters are safe.

(4) Despite the above suggestions, we remind the Master that the resources and information provided by the vessel traffic service center, pilot station, agent, etc. might be inadequate, the Master has the responsibility and absolute right to decide whether to follow the suggestions provided according to his professional judgment.

(5) It is suggested that the Master plot the geographical scope of the fishery farms on the electronic or paper chart for reference, and develop a comprehensive voyage plan, in order to prevent accidentally entering into the fishery farms.

(6) Try to avoid entering and leaving the above-mentioned ports during night time or under restricted visibility circumstances as far as practicable in view of the shipping schedule, commercial considerations and other relevant conditions.

(7) When ships enter or leave the above ports, prepare engine and both anchors in advance, adopt safe speed, take into due consideration of enhancing bridge manpower, posting additional lookouts on the bridge and forecastle.

(8) In the event of an unfortunate accident relating to fishery farms, please report to the vessel traffic service center, the local agent and the ship management company in time. Our timely intervention will be more conducive to fixing relevant favorable evidence and safeguarding the rights and interests of Owners.

Full text of the Circular is available via the [link](#).

ELTVEDT & O'SULLIVAN PROVIDES WITH INFORMATION CONCERNING THE SITUATION IN GUINEA

Ingosstrakh' s P&I Correspondent in Africa Messrs. Eltvedt & O'Sullivan inform regarding the current situation in Guinea. They have advised that they obtained some information over the phone from their local representatives in Conakry. Eltvedt & O'Sullivan report that the local Government was dissolved by a Decree, which is supposed to be signed by the current military leader (General Mamady Doumbouya). All former Ministers are banned from leaving the country. Deputy Ministers are running current affairs, awaiting the new Government.

The commercial operations in the port are still going on. However, the Union has called for a general strike, commencing on **Monday 26/02/2024**.

We hope that this will help the Owners whose ships call to Guinean ports.